

Honeywell Gas Detection

Sensepoint XCL Fixed Gas Detector



Quick Start Guide

Sensepoint XCL Fixed Gas Detector

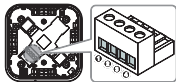
Quick Start Guide

Read and understand the Sensepoint XCL Operating Instructions before installing, operating or servicing this product. These are available for download from the Honeywell Analytics website. Visit www.honeywellanalytics.com.

1 Safety

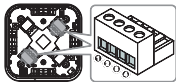
Installation must be in accordance with the recognized standards of the appropriate authority in the country and locality concerned.

2 Analog (mA) Output Versions



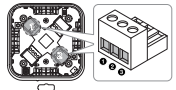
- | | |
|------------------------|-------------------|
| 1) +24 V DC or 24 V AC | 2) 0 V or 24 V AC |
| 3) 4 to 20 mA | 4) Common |

3 Modbus RTU Output Versions



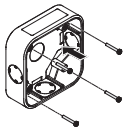
- | | |
|------------------------|-------------------|
| 1) +24 V DC or 24 V AC | 2) 0 V or 24 V AC |
| 3) A | 4) B |

4 Relay Output



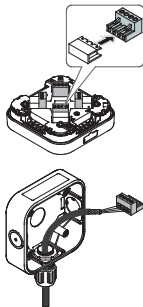
- | | |
|-------------------------|-----------|
| 1) Normally closed (NC) | 2) Common |
| 3) Normally open (NO) | |

5 Securing the Back Box to a Wall



1. There are four screw positions in the rear of the back box for mounting purposes. Punch the required screw positions or drill using a 4 mm drill.
2. Secure the back box in its mounting position with suitable fixings appropriate to the mounting surface. Do not over-tighten.
3. There are four cable entry knock-outs on three of the sides and rear face of the back box. Drill or punch the entries as required.

6 Cable Connections



1. Fit suitable cable glands (included) or conduit fittings to the opened cable entries.
2. Feed the cable through the cable gland.
3. Turn over the detector module and locate the terminal blocks on the back. Remove the terminal blocks, pulling them toward the center of the module.
4. Connect the cable to the appropriate terminal block, referring to section 2 to 4 depending on the version. Strip and insert the end of each wire into the corresponding terminal hole, and tighten the terminal screw, using a flat-blade terminal screwdriver until the wire is secured.
5. Replace the terminal blocks in their correct positions.

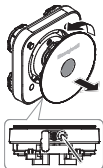
7 Ground Connections

Effective grounding is crucial to ensure stable Modbus communications and to limit the effects of radio frequency interference. Ground points are provided inside the back box. In order to prevent false readings or alarms as a result of ground loops, ensure that the shield of all cables are grounded at a single point, preferably at the controller. Consideration should also be given to how conduit, glands and the internal earth plate are also grounded.

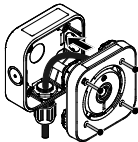
NOTE

Any earth regime must avoid earth loops.

8 Securing the Detector Module to the Back Box



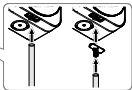
1. Remove the front cover from the detector module to expose the retaining screws as follows:
 - a) Pull the flap on the bottom side to open it.
 - b) To unlock the front cover, insert a thin, straight tool, such as a small screwdriver, into the hole to the right of the tube spigot.
 - c) While applying slight pressure to the tool, turn the cover counterclockwise until it stops, and then lift it out.



2. Position the detector module onto the back box ensuring that the Status Indicator is in the top left-hand corner when viewed from the front.
3. Tighten the four retaining screws using a No. 2 Phillips screwdriver to secure.
4. Where used, tighten the sealing nut of the cable gland to secure the cable. Refer to the cable gland manufacturer's instructions.
5. Replace the front cover by placing it into the detector module and rotate it clockwise until it locks into position.

9 Remote Gassing Connection

If the gas detector is installed in an inaccessible location, such as overhead on a ceiling, connect a tube to the gas detector for bump test.



- For a temporary connection, open the flap on the bottom side and connect suitable tubing compatible with the gas type of the sensor to the tube spigot.
- For a permanent connection, remove the flap, connect the tube connector (available separately) to the spigot, and then connect a tube to the tube connector. Secure the tube using a cable tie or small jubilee clip, taking care not to over-tighten it.

10 Status Indicator

The detector features an external visual status indicator on its front face.



Normal: The indicator is lit **GREEN** when the concentration of the target gas is within normal range.

The Normal indication can also be set to **Confidence Flash** or **Off**.

Alarm: **RED** flashes rapidly when the gas concentration is beyond the alarm-level threshold.

Fault: **YELLOW** flashes rapidly when the gas detector is in a fault state.

Bluetooth pairing: **BLUE** flashes when Bluetooth® pairing between the gas detector and a smartphone is in progress.

Bluetooth connected: Steady **BLUE** is lit when a Bluetooth connection is established.

11 Connecting to a Detector via Bluetooth (Bluetooth versions only)

To pair your smartphone with a specific detector, follow these steps:

1. Download **Sensepoint App** from Google Play Store. Install and launch the app.
2. Create and register a user account, and log on with the created account information.
3. To associate with one or more gas detectors, scan the QR code on the sheet included in the box or enter its Activation Key.
4. Complete the installation of the detectors.
5. On the app's home screen, tap **DETECTORS** to scan for available detectors.
6. Select a detector from the detector list to pair with it.
7. Look for the detector whose Status Indicator is flashing blue.
8. Tap **Confirm Detector** to pair with that detector. Otherwise, tap **Return to list** to select one of the others.

For more information, please refer to the Sensepoint App manual.

When a Bluetooth® connection is established, the detector's reading is displayed on the app interface with the gas type and other information.

1.2 Specifications

| Physical specification | |
|----------------------------|---|
| Dimension | 113 mm × 113 mm × 59 mm (4.4 × 4.4 × 2.3 in) |
| Weight | 500 g (1.1 lb) |
| Power supply | |
| DC input voltage (nominal) | 24 V DC ¹ |
| AC input voltage (nominal) | 24 V AC ¹ , 50/60 Hz |
| Inrush current | Less than 850 mA |
| Maximum power consumption | |
| mA Versions | < 1.2 W (toxic), < 1.7 W (flammable) |
| Modbus versions | < 0.7 W (toxic), < 1.2 W (flammable) |
| Relay versions | Additional 0.6 W |
| Outputs ² | |
| Analog output | 0 to 22 mA sink or source (configurable) |
| Digital output | Modbus RTU |
| Relay output | 2 × dry contact relays for fault and alarm signalling. Rated at 5 A @ 24 V DC, 5 A @ 240 V AC |
| Operating Environment | |
| Operating temperature | -20 to 50°C (-4 to 122 °F) |
| Storage temperature | 0 to 30°C (32 to 86 °F) |
| Humidity | 0 to 99% (non-condensing) ³ |
| Atmospheric pressure | 90 to 110 kPa |
| Ingress protection | IP65 / Type 4 (in accordance with NEMA 250) |
| Installation category | II (UL/CSA/IEC/EN 61010-1) |
| Pollution degree | 2 (UL/CSA/IEC/EN 61010-1) |
| Cable Gland | |
| Inner knock-out | M20 or ½ NPT |
| Outer knock-out | M25 or ¾ NPT |
| Gas Test Tubing | |
| Inner diameter | 4 or 6 mm |
| Outer diameter | 6 or 8 mm |

¹ mA versions: 11 to 32 VDC, Modbus versions: 9 to 32 VDC

² 20 to 27 VAC

³ Dependent on version

⁴ Flammable catalytic versions: 10 to 90% RH. Operating the detector outside of this range may result drift and a decrease detector accuracy.

Honeywell

THE POWER OF CONNECTED

3017M5000_1 HAA170019

© 2017 Honeywell Analytics

Find out more

www.honeywellanalytics.com

Contact Honeywell Analytics:

Americas

Honeywell Analytics, Inc.
405 Barclay Blvd.
Lincolnshire, IL 60069
USA
Tel: +1 847 955 8200
Toll free: +1 800 538 0363
Fax: +1 847 955 8210
detectgas@Honeywell.com

Europe, Middle East, Africa

Life Safety Distribution GmbH
Javastrasse 2
8604 Hegnau
Switzerland
Tel: +41 (0)44 943 4300
Fax: +41 (0)44 943 4398
gasdetection@honeywell.com

Asia Pacific, India

Honeywell Analytics Asia Pacific, Co., Ltd.
7F SangAm IT Tower
434 Worldcup Buk-ro, Mapo-gu
Seoul 03922
South Korea
Tel: +82 (0)2 6909 0300
Fax: +82 (0)2 2025 0388
India Tel: +91 124 4752700
China Tel: +86 10 5885 8788 3000
analytics.ap@honeywell.com

www.honeywell.com

Copyright © 2016 Honeywell Analytics Co., Ltd.
All rights reserved.

For full operating
instructions:



Honeywell
THE POWER OF CONNECTED

DSA Suppliers

Thank you for reading this. For pricing or further information, please contact us.

W: <https://dsasuppliers.com>

E: sales@dsasuppliers.com

P: +441158390391

Leading UK Supplier
Brand New & Genuine OEM Parts
Delivered Worldwide



Worldwide Delivery



1000+ Genuine Parts & Equipment

Please Note - The information, product designs & specifications in this document are subject to change without notice.
DSA Suppliers is not responsible for determining the suitability of this product.